



Pierce Low Profile Wrap PRCL Series

Features

This low profile, clean appearance, surface mounted wrap provides high light levels with a smooth white lens. It can be used in various residential applications. Fixture mounts to standard junction box (not included). It can be used in various commercial and residential applications.

Bi-Level Motion Sensor (Optional '-MS')

- Built-in daylight sensor
- Detection area, time delay and daylight threshold can be precisely set via DIP switch
- Wide detection area, range up to 50 ft. (16 m) max

Construction

Housing is die-formed of 22-gauge steel. Power supply connections must be made inside the junction box.

Finish

Housing is finished in lighting grade white baked gloss enamel paint.

Diffuser

Acrylic diffuser is .05" thick white sheet.

Electrical

This unit is wired with a constant current low voltage electronic LED driver rated for 120-277V compatible with residential (TRIAC/ELV) and commercial (0-10V) dimmers TRIAC and ELV dimming only at 120VAC. MS-Fixture includes integrated motion sensor with Built-in 3-Step dimming function. Not compatible with dimming controls.

Lamping

Fixture includes LED modules capable of producing 5000 source lumens: Adjustable choice 3000K, 3500K, 4000K (CCT) Rated for 50,000 Hrs., 90 CRI.

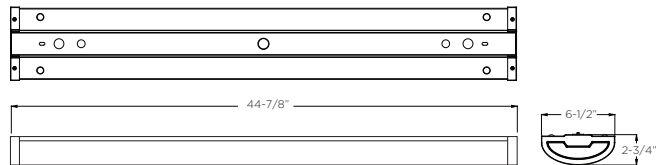
Certification

cETLus listed
ENERGY STAR® Qualified
Title 24/JA8 Compliant

Warranty

Limited warranty: This fixture is free from defects in materials and workmanship for a period of 5 years from date-of-purchase.

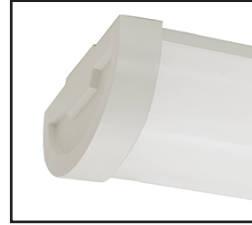
Specifications and dimensions subject to change without notice.



Ordering Information:

White	LED	Source Lumens	Adjustable CCT	L	W	D
PRCL450750LAJUDWH	50W	5000	3000K/3500K/4000K	44-7/8"	6-1/2"	2-3/4"
White with motion sensor						
PRCL450750LAJUDWH-MS	50W	5000	3000K/3500K/4000K	44-7/8"	6-1/2"	2-3/4"

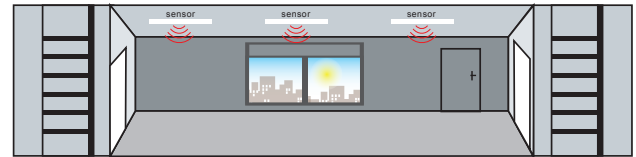
LOCATION		DATE
PREPARED BY		QUANTITY
COMMENTS		FIXTURE TYPE
CATALOG NUMBER		



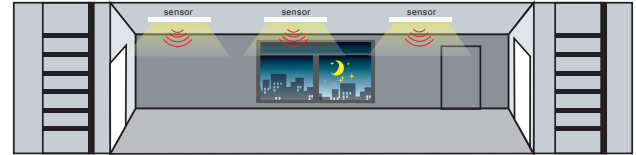
3in1 color temperature
3000K/3500K/4000K



When sufficient light, the fixtures will not switch on.



When insufficient light, the fixtures turn on at desired dimming level (10% - 50%).



When motion is detected, fixtures switch to full light output.



After standby period of no motion, fixtures return to desired dimming level (10%-50%).

